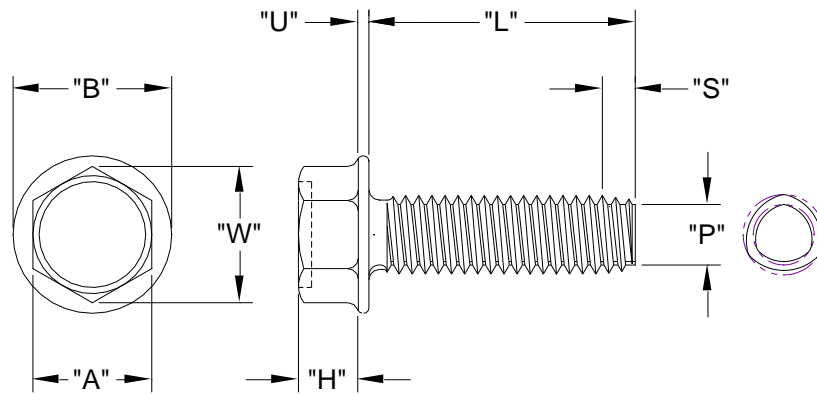


UNSLOTTED INDENTED HEX WASHER HEAD TRI-LOBE T.R.S.

88XXXXUHWT
APRIL, 2014
REV 00
PAGE 1 of 1

Nominal Screw Length	Tolerance On Screw Length
Up To & Including 3/4"	+0 / -0.03
Over 3/4" to 1-1/2" Inclusive	+0 / -0.05
Over 1-1/2"	+0 / -0.06



Nominal Screw Size	Basic Screw Size	"Cd"		"Dd"		"p"		"S"		"A"		"W"		"H"		"B"		"U"	
		Circumscribing Diameter		Major Diameter		Point Diameter		Point Taper Length		Width Across Flats		Width Across Corners		Head Height		Washer Diameter		Washer Thickness	
		Max.	Min.	Max.	Min.	Max.	Max.	Min.	Max.	Min.	Max.	Min.	Max.	Min.	Max.	Min.	Max.	Min.	Max.
1/4 - 20	0.250	0.2550	0.2490	0.2450	0.2390	0.206	0.175	0.100	0.375	0.367	0.409	0.190	0.172	0.520	0.480	0.050	0.030		

<p>Head Standard: ASME B18.6.3 Material: 300 Series Stainless Steel (18-8) Mechanical Properties: Tensile Stress: 81,000 psi Min. (Rb85) Finish: Passivate & Wax</p>	<p>Common Uses: Increased bearing surface without adding a washer; Material must be at least 20 points Rb lower than screw; Used in aluminum castings and extrusions</p>
---	---