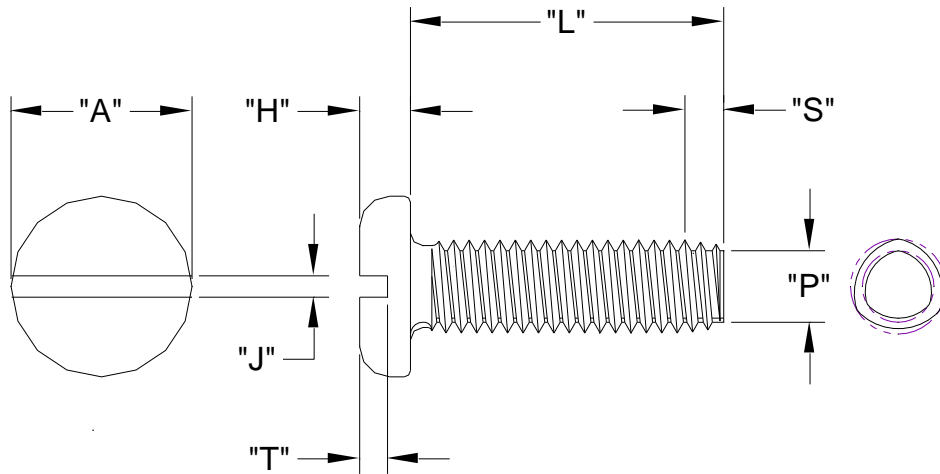


SLOTTED PAN HEAD TRI-LOBE T.R.S.

XXXXSPTZ
APRIL, 2014
REV 00
PAGE 1 of 1

Nominal Screw Length	Tolerance On Screw Length
Up To & Including 3/4"	+0 / -0.03
Over 3/4" to 1-1/2" Inclusive	+0 / -0.05
Over 1-1/2"	+0 / -0.06



Nominal Screw Size	Basic Screw Size	"Cd"		"Dd"		"p"		"s"		"A"		"H"		"J"		"T"	
		Circumscribing Diameter		Major Diameter		Point Diameter		Point Taper Length		Head Diameter		Head Height		Slot Width		Slot Depth	
		Max.	Min.	Max.	Min.	Max.	Min.	Max.	Min.	Max.	Min.	Max.	Min.	Max.	Min.	Max.	Min.
#4 - 40	0.112	0.1145	0.1105	0.1095	0.1055	0.090	0.088	0.050	0.219	0.205	0.068	0.058	0.039	0.031	0.040	0.030	
#6 - 32	0.138	0.1410	0.1350	0.1350	0.1290	0.111	0.109	0.062	0.270	0.256	0.082	0.072	0.048	0.039	0.050	0.037	
#8 - 32	0.164	0.1670	0.1610	0.1610	0.1550	0.137	0.109	0.062	0.322	0.306	0.096	0.085	0.054	0.045	0.058	0.045	
#10 - 24	0.190	0.1940	0.1880	0.1860	0.1800	0.153	0.146	0.083	0.373	0.357	0.110	0.099	0.060	0.050	0.068	0.053	
#10 - 32		0.1930	0.1870	0.1870	0.1810	0.163	0.109	0.062									

Head Standard: ASME B18.6.3
 Performance Standard: SAE J-81
 Material: Carbon Steel
 Heat Treat: Case Hardened Rc45 Min.
 Finish: Commercial Zinc, Bake & ROHS Compliant Clear Chromate
 Per ASTM F1941 Code Fe/Zn 3A Plus Wax

Common Uses:
 Most common head style; higher head height for increased strength; Used in sheet metal >60% of screw size, extruded sheet metal, zinc & aluminum die casting