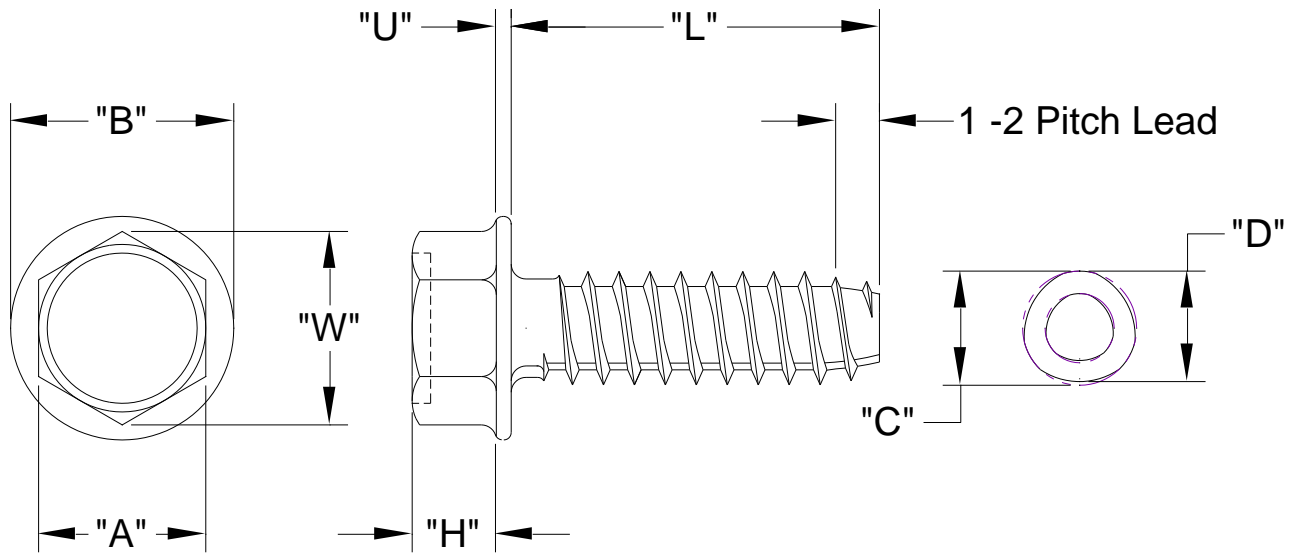


**UNSLOTTED INDENTED  
HEX WASHER HEAD  
TRILOBULAR 48-2 T.F.S.**

XXXXUHPZ
APRIL, 2014
REV 00
PAGE 1 of 1

Nominal Screw Length	Tolerance On Screw Length
Up To & Including 3/4"	± .030
Over 3/4"	± .050



Nominal Screw Size	"C"		"D"		"A"		"W" Width Across Corners	"H"		"B"		"U"	
	Circumscribing Circle		Major Diameter		Width Across Flats			Head Height		Washer Diameter		Washer Thickness	
	Max.	Min.	Max.	Min.	Max.	Min.	Min.	Max.	Min.	Max.	Min.	Max.	Min.
#4-20	0.127	0.121	0.123	0.117	0.188	0.181	0.202	0.060	0.049	0.243	0.225	0.019	0.011
#6-19	0.147	0.141	0.143	0.137	0.250	0.244	0.272	0.093	0.080	0.328	0.302	0.025	0.015
#8-16	0.185	0.179	0.179	0.173	0.250	0.244	0.272	0.110	0.096	0.348	0.322	0.031	0.019
#10-14	0.212	0.206	0.208	0.202	0.312	0.305	0.340	0.120	0.105	0.414	0.384	0.031	0.019
1/4-10	0.276	0.270	0.268	0.262	0.375	0.367	0.409	0.190	0.172	0.520	0.480	0.050	0.030

Head Standard: ASME B18.6.3  
 Material: Steel Case Hardened  
 Surface Hardness: Rc45 Min  
 Finish: Commercial Zinc, Bake, ROHS Compliant Clear Chromate, Wax  
 Per ASTM F1941 Code Fe/Zn 3A

**COMMON USES:**  
 Plastics  
 Less Than 800,000 psi Flexural Modulus