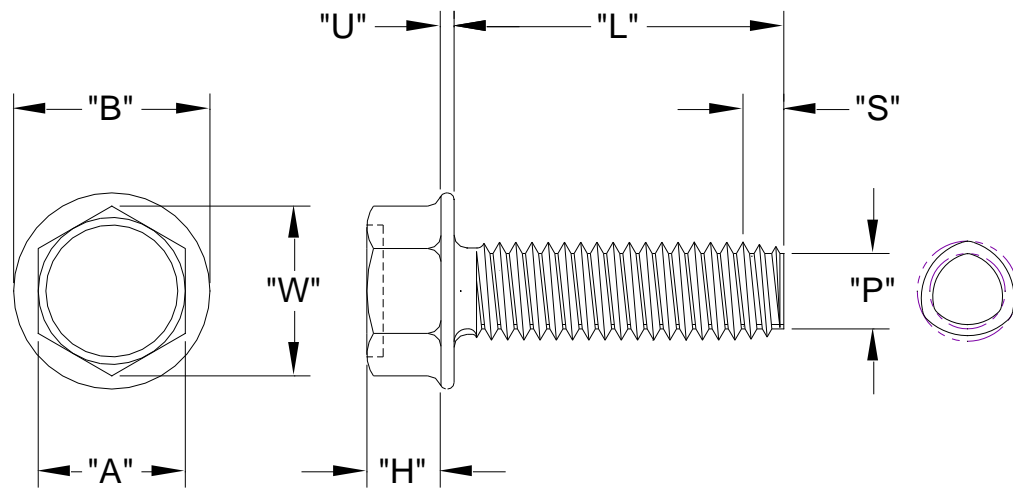


# UNSLOTTED INDENTED HEX WASHER HEAD TRI-LOBE T.R.S.

XXXXUHWZT
APRIL, 2014
REV 00
PAGE 1 of 1

Nominal Screw Length	Tolerance On Screw Length
Up To & Including 3/4"	+0 / -0.03
Over 3/4" to 1-1/2" Inclusive	+0 / -0.05
Over 1-1/2"	+0 / -0.06



Nominal Screw Size	Basic Screw Size	"Cd"		"Dd"		"p"	"s"		"A"		"W"	"H"		"B"		"U"	
		Circumscribing Diameter		Major Diameter		Point Diameter	Point Taper Length		Width Across Flats		Width Across Corners	Head Height		Washer Diameter		Washer Thickness	
		Max.	Min.	Max.	Min.	Max.	Max.	Min.	Max.	Min.	Min.	Max.	Min.	Max.	Min.	Max.	Min.
#4 - 40	0.112	0.1145	0.1105	0.1095	0.1055	0.090	0.088	0.050	0.188	0.181	0.202	0.060	0.049	0.243	0.225	0.019	0.011
#6 - 32	0.138	0.1410	0.1350	0.1350	0.1290	0.111	0.109	0.062	0.250	0.244	0.272	0.093	0.080	0.328	0.302	0.025	0.015
#8 - 32	0.164	0.1670	0.1610	0.1610	0.1550	0.137	0.109	0.062	0.250	0.244	0.272	0.110	0.096	0.348	0.322	0.031	0.019
#10 - 24	0.190	0.1940	0.1880	0.1860	0.1800	0.153	0.146	0.083	0.312	0.305	0.340	0.120	0.105	0.414	0.384	0.031	0.019
#10 - 32		0.1930	0.1870	0.1870	0.1810	0.163	0.109	0.062									
#12 - 24	0.215	0.2200	0.2140	0.2120	0.2060	0.179	0.146	0.083	0.312	0.305	0.340	0.155	0.139	0.432	0.398	0.039	0.022
1/4 - 20	0.250	0.2550	0.2490	0.2450	0.2390	0.206	0.175	0.100	0.375	0.367	0.409	0.190	0.172	0.520	0.480	0.050	0.030
5/16 - 18	0.313	0.3180	0.3120	0.3070	0.3010	0.264	0.194	0.111	0.500	0.489	0.545	0.230	0.208	0.676	0.624	0.055	0.035
3/8 - 16	0.375	0.3810	0.3750	0.3685	0.3625	0.320	0.219	0.125	0.562	0.551	0.614	0.295	0.270	0.780	0.720	0.063	0.037
1/2 - 13	0.500	0.5075	0.5015	0.4920	0.4860	0.433	0.269	0.154	0.750	0.735	0.820	0.400	0.367	1.040	0.960	0.085	0.050

Head Standard: ASME B18.6.3  
 Performance Standard: SAE J-81  
 Material: Carbon Steel  
 Heat Treat: Case Hardened Rc45 Min.  
 Finish: Commercial Zinc, Bake & ROHS Compliant Clear Chromate  
 Per ASTM F1941 Code Fe/Zn 3A Plus Wax

**Common Uses:**  
 Increased bearing surface w/o adding a washer. Excellent for softer materials to reduce embedment; Used in sheet metal >60% of screw size, extruded sheet metal, zinc & aluminum die castings.