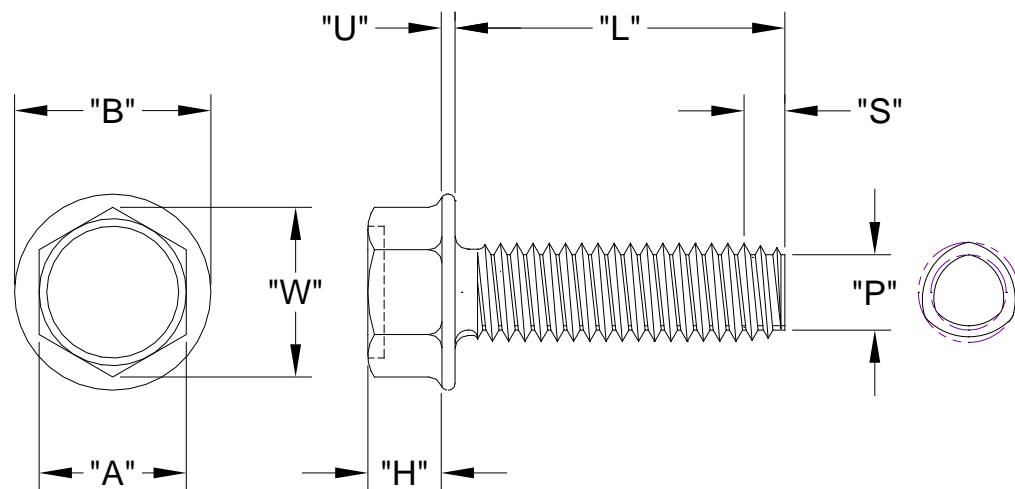


UNSLOTTED INDENTED
HEX WASHER HEAD
TRI-LOBE T.R.S.
ZINC BLACK WAX

XXXXUHWZBW96
October, 2017
REV 00
PAGE 1 of 1

Nominal Screw Length	Tolerance On Screw Length
Up To & Including 3/4"	+0 / -0.03
Over 3/4" to 1-1/2" Inclusive	+0 / -0.05
Over 1-1/2"	+0 / -0.06



Nominal Screw Size	Basic Screw Size	"Cd"		"Dd"		"p"		"s"		"A"		"W"		"H"		"B"		"U"	
		Circumscribing Diameter		Major Diameter		Point Diameter		Point Taper Length		Width Across Flats		Width Across Corners		Head Height		Washer Diameter		Washer Thickness	
		Max.	Min.	Max.	Min.	Max.	Min.	Max.	Min.	Max.	Min.	Max.	Min.	Max.	Min.	Max.	Min.	Max.	Min.
#4 - 40	0.112	0.1145	0.1105	0.1095	0.1055	0.090	0.088	0.050	0.188	0.181	0.202	0.060	0.049	0.243	0.225	0.019	0.011		
#6 - 32	0.138	0.1410	0.1350	0.1350	0.1290	0.111	0.109	0.062	0.250	0.244	0.272	0.093	0.080	0.328	0.302	0.025	0.015		
#8 - 32	0.164	0.1670	0.1610	0.1610	0.1550	0.137	0.109	0.062	0.250	0.244	0.272	0.110	0.096	0.348	0.322	0.031	0.019		
#10 - 24	0.190	0.1940	0.1880	0.1850	0.1790	0.153	0.146	0.083	0.312	0.305	0.340	0.120	0.105	0.414	0.384	0.031	0.019		
#10 - 32		0.1930	0.1870	0.1860	0.1800	0.163	0.109	0.062											
#12-24	0.215	0.2200	0.2140	0.2120	0.2060	0.179	0.146	0.083	0.312	0.305	0.340	0.155	0.139	0.432	0.398	0.039	0.022		
1/4 - 20	0.250	0.2550	0.2490	0.2450	0.2390	0.206	0.175	0.100	0.375	0.367	0.409	0.190	0.172	0.520	0.480	0.050	0.030		
5/16 - 18	0.313	0.3180	0.3120	0.3070	0.3010	0.264	0.194	0.111	0.500	0.489	0.545	0.230	0.208	0.676	0.624	0.055	0.035		
3/8 - 16	0.375	0.3810	0.3750	0.3685	0.3625	0.320	0.219	0.125	0.562	0.551	0.614	0.295	0.270	0.780	0.720	0.063	0.037		
1/2 - 13	0.500	0.5075	0.5015	0.4920	0.4860	0.433	0.269	0.154	0.750	0.735	0.820	0.400	0.367	1.040	0.960	0.085	0.050		

Head Standard: ASME B18.6.3
 Performance Standard: SAE J-81
 Material: Carbon Steel
 Heat Treat: Case Hardened Rc45 Min.
 Finish: Zinc, Bake & ROHS Compliant Black Chromate
 SST 96 Hr White, 120 Hr Red Plus Wax

Common Uses:
 Increased bearing surface w/o adding a washer. Excellent for softer materials to reduce embedment; Used in sheet metal >60% of screw size, extruded sheet metal, zinc & aluminum die castings.